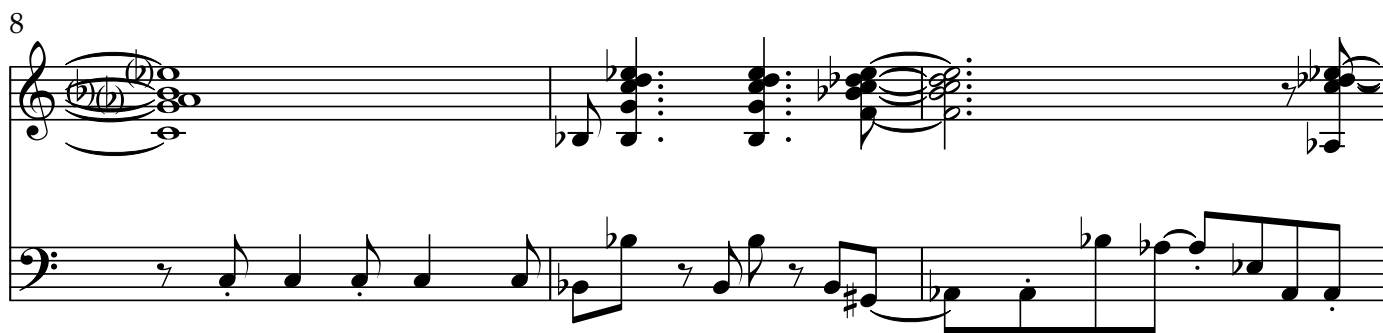
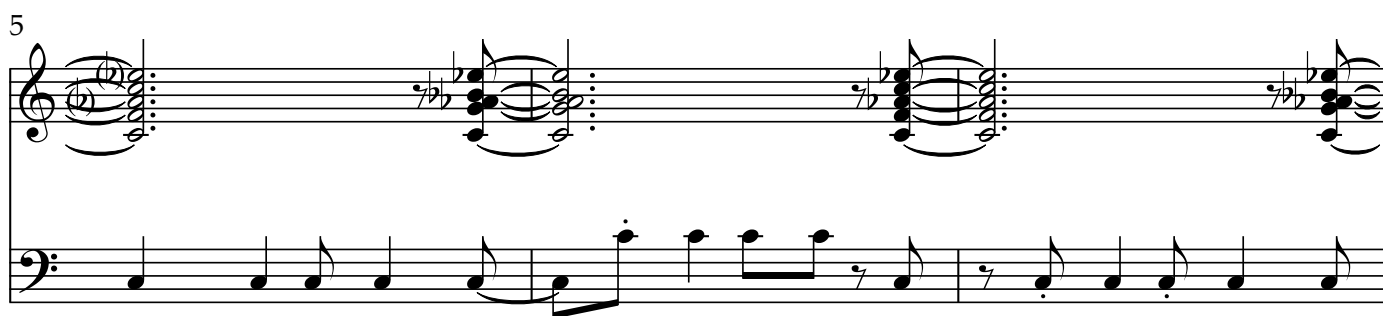
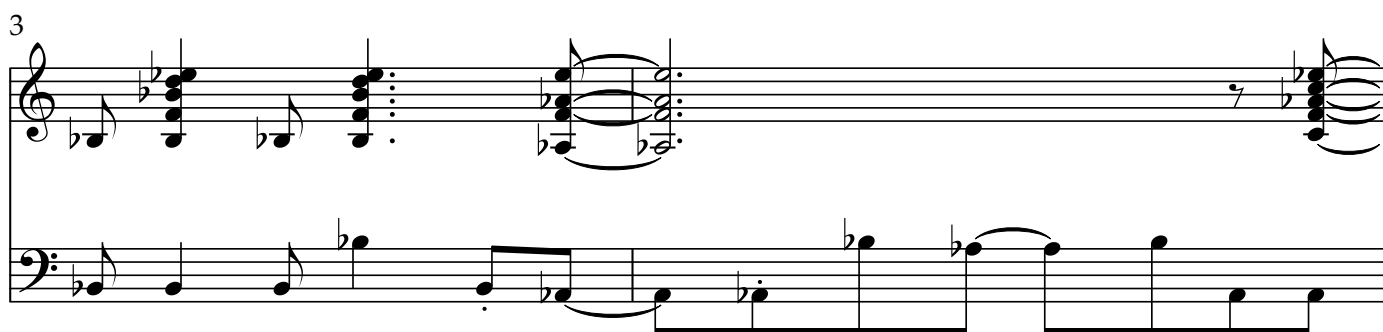
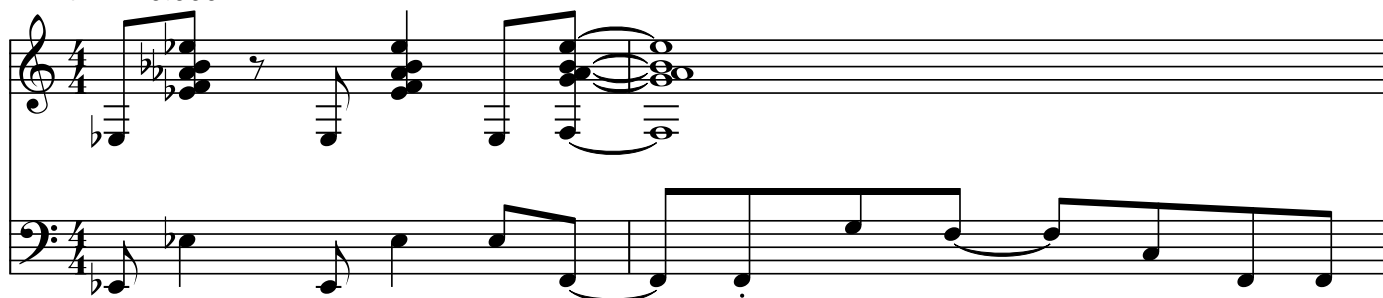


slide down to the ground

$\text{♩} = 140.0001$



11

Measures 11-13 of a musical score. Measure 11 features a treble staff with a complex chordal texture and a bass staff with a rhythmic pattern of eighth and sixteenth notes. Measure 12 continues the treble staff's texture while the bass staff has rests. Measure 13 shows a change in the treble staff's texture and a more active bass line.

14

Measures 14-16 of a musical score. Measure 14 has a treble staff with a sustained chord and a bass staff with a steady eighth-note rhythm. Measure 15 shows a change in the treble staff's texture. Measure 16 features a treble staff with a complex texture and a bass staff with a rhythmic pattern.

17

Measures 17-19 of a musical score. Measure 17 has a treble staff with a complex texture and a bass staff with a rhythmic pattern. Measure 18 continues the treble staff's texture. Measure 19 shows a change in the treble staff's texture and a more active bass line.

21

Measures 21-24 of a musical score. Measure 21 features a treble staff with a complex texture and a bass staff with a rhythmic pattern. Measure 22 continues the treble staff's texture. Measure 23 shows a change in the treble staff's texture. Measure 24 features a treble staff with a complex texture and a bass staff with a rhythmic pattern.

25

Measures 25-27 of a musical score. Measure 25 features a treble staff with a complex texture and a bass staff with a rhythmic pattern. Measure 26 continues the treble staff's texture. Measure 27 shows a change in the treble staff's texture and a more active bass line.